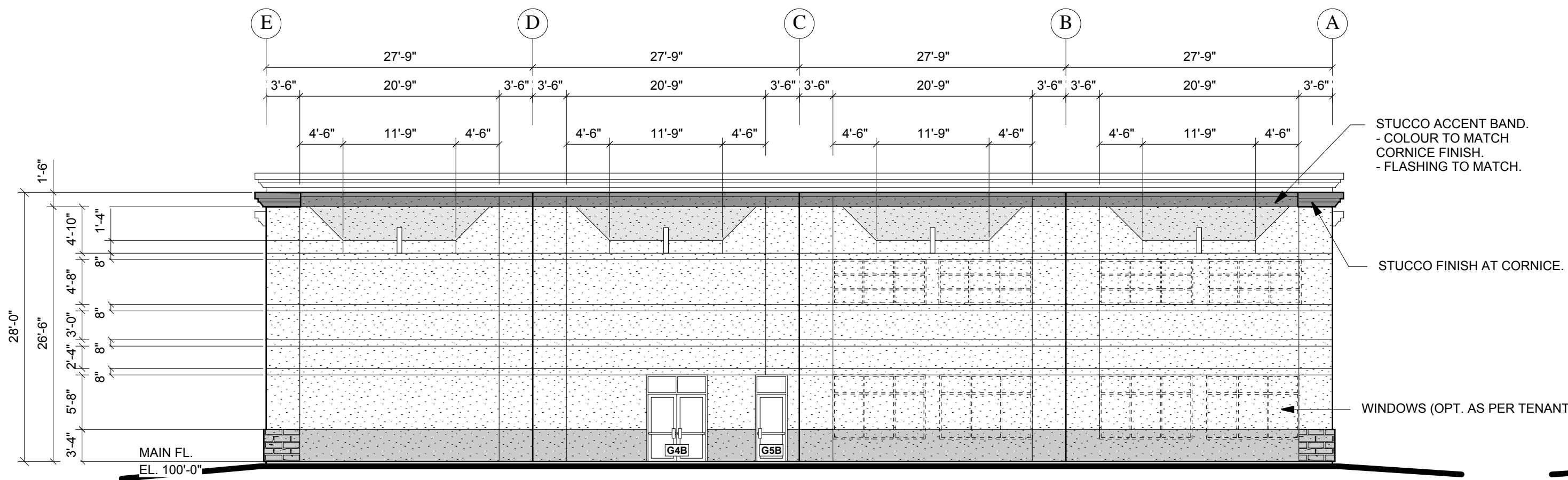
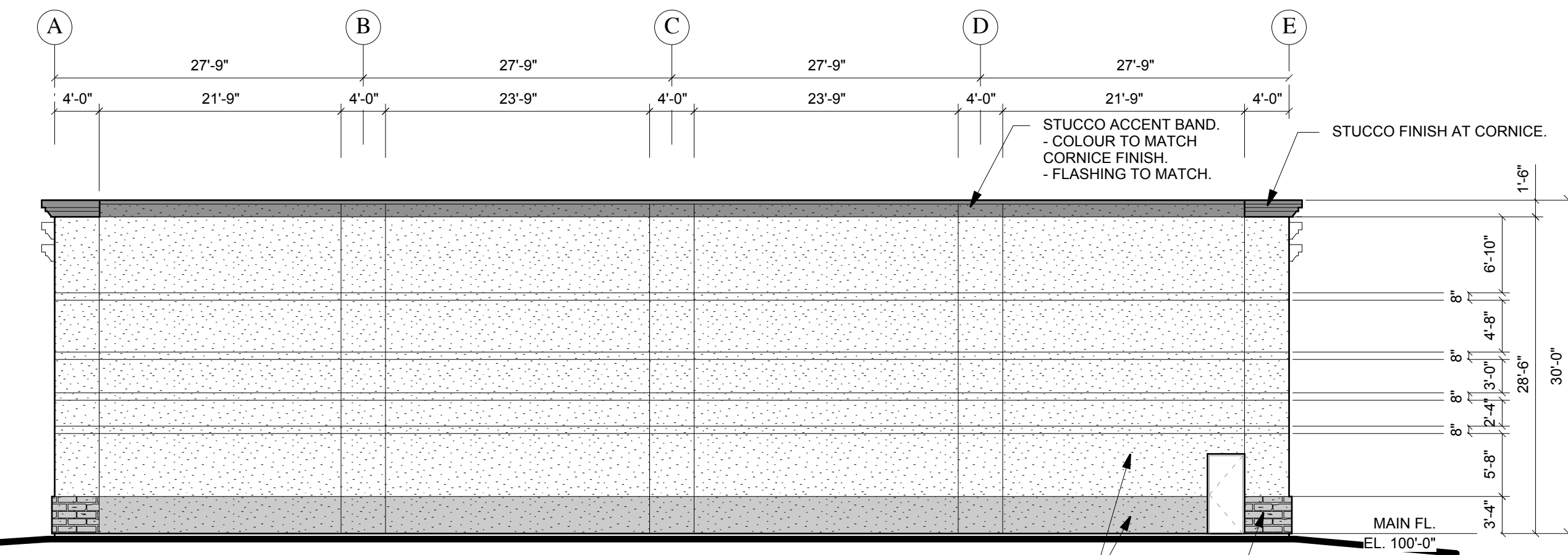


SOUTH ELEVATION - Building "B"
SCALE: 3/32" = 1'-0"

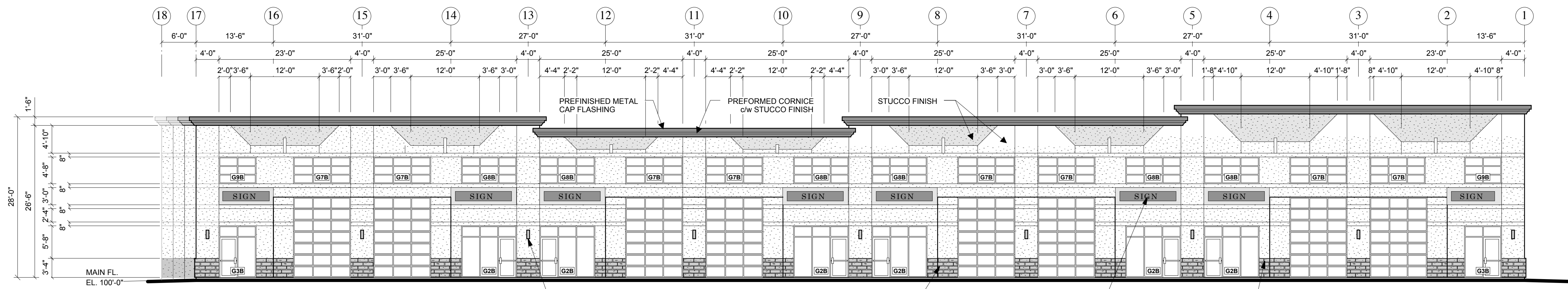
NOTE: MATERIALS SIMILAR FOR ALL ELEVATIONS.



EAST ELEVATION - Building "B"
SCALE: 3/32" = 1'-0"

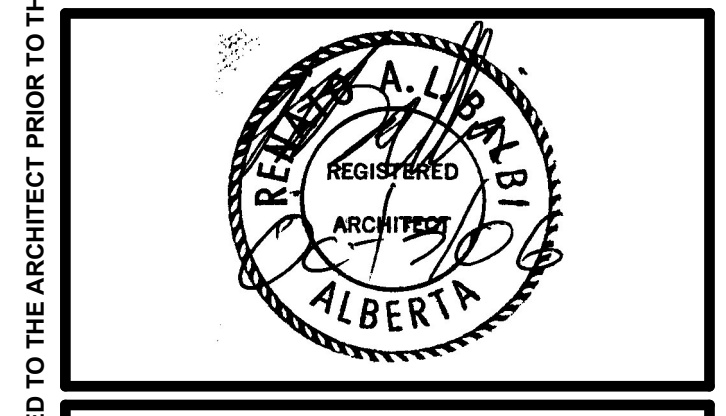


WEST ELEVATION - Building "B"
SCALE: 3/32" = 1'-0"



NORTH ELEVATION - Building "B"
SCALE: 3/32" = 1'-0"

Rick Balbi Architect Ltd.
5917 - 17th Street S.W.
Calgary, Alberta T2H 0G4
Ph: (403) 253-2853 Fax: (403) 253-3078
general@rballbi.ca



Structural:
Richards Engineering
P.O. Box 123
Longview, Alberta, T0L 1H0
Ph: (403) 558-2140, Fax: (403) 558-2148

Mechanical/Electrical:
Acorn Consulting Engineering Group Ltd.
1921 - 10th Avenue S.W.
Calgary, Alberta, T3C 0K3
Ph: (403) 228-2827, Fax: (403) 244-8786

Project:
TRI VALE CONSTRUCTION LTD.
OFFICE, WAREHOUSE DEVELOPMENT
AIRDRIE, ALBERTA

Revisions:
AUG. 31/06 - ISSUED FOR BUILDING PERMIT
MAR 1/06 - PORTIONS OF BRICK REMOVED FROM EAST & WEST ELEV; PORTIONS OF CORNICE REMOVED FROM EAST & WEST ELEV
MAR 30/07 - OH DRS TO 14' NORTH ELEVATION, SIGNAGE ADJUSTED TO SUIT

Drawing Title:
Building Elevations Building 'B'

JOB No. 2006-183
DATE: August 04/06
DRAWN: BW
Sheet A6 of 7

THIS PLAN AND DESIGN ARE, AND AT ALL TIMES REMAIN THE EXCLUSIVE PROPERTY OF RICK BALBI ARCHITECT LTD. AND CANNOT BE USED OR REPRODUCED WITHOUT WRITTEN CONSENT. DO NOT SCALE DRAWINGS. ANY DISCREPANCIES ARE TO BE REPORTED TO THE ARCHITECT PRIOR TO THE COMMENCEMENT OF ANY WORK.