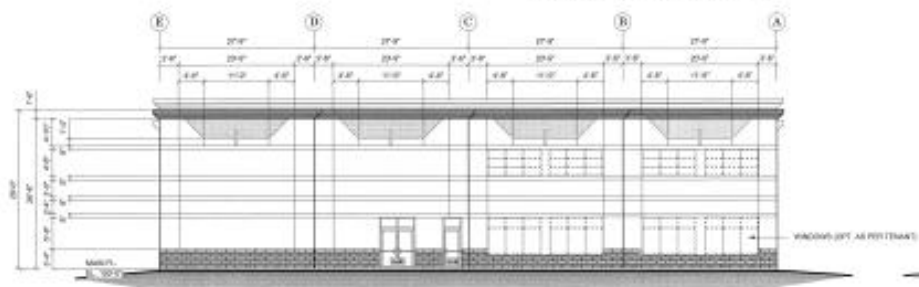


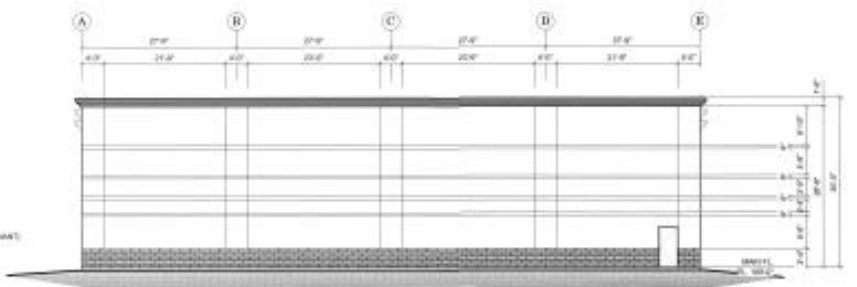


SOUTH ELEVATION - BUILDING 'B'
SCALE: 1/8" = 1'-0"

NOTE: MATERIALS SIMILAR FOR ALL ELEVATIONS.



EAST ELEVATION - BUILDING 'B'
SCALE: 1/8" = 1'-0"



WEST ELEVATION - BUILDING 'B'
SCALE: 1/8" = 1'-0"



NORTH ELEVATION - BUILDING 'B'
SCALE: 1/8" = 1'-0"