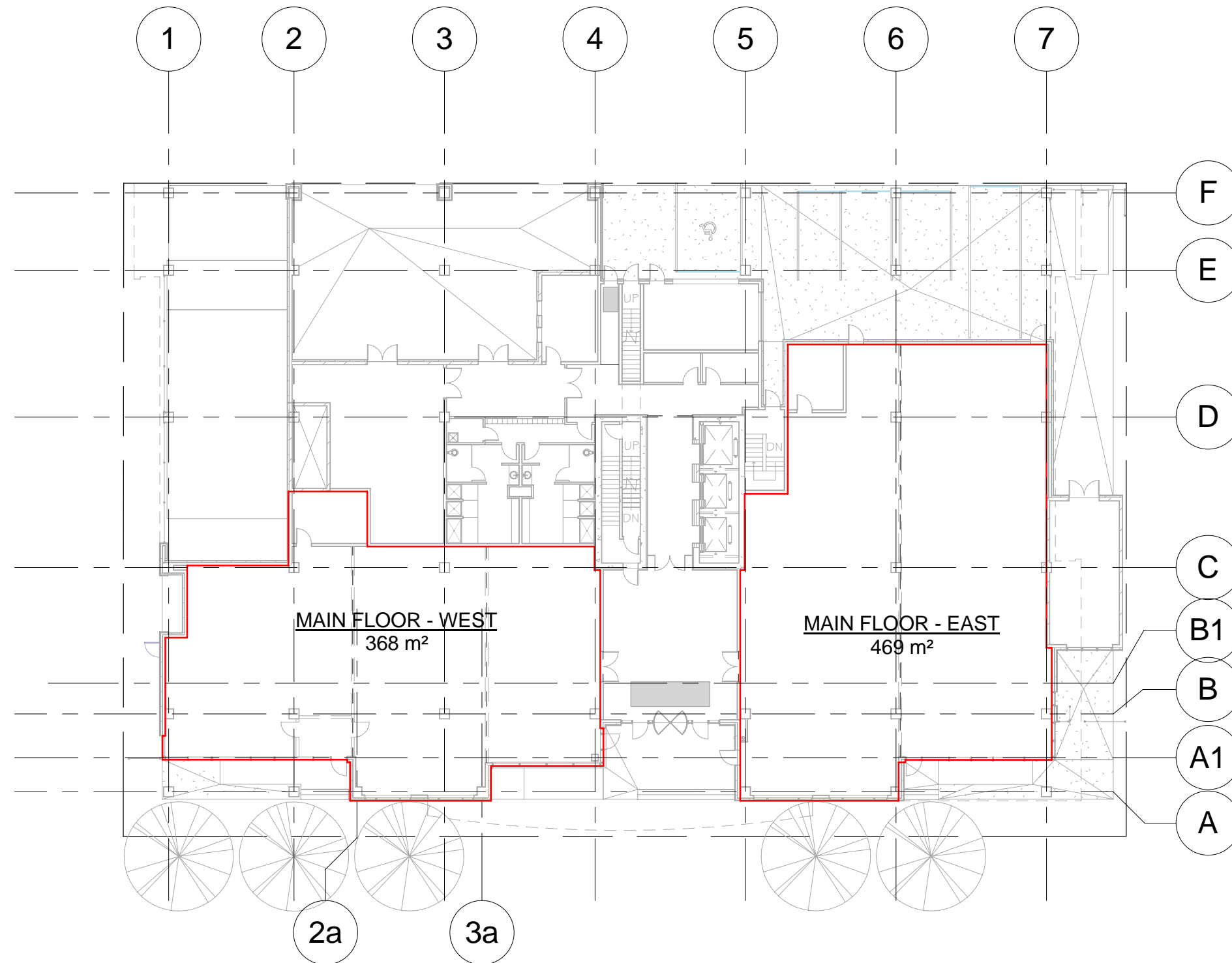


RENTABLE AREA CALCULATIONS BASED ON STANDARD
ANSI/BOMA Z65.1-1996

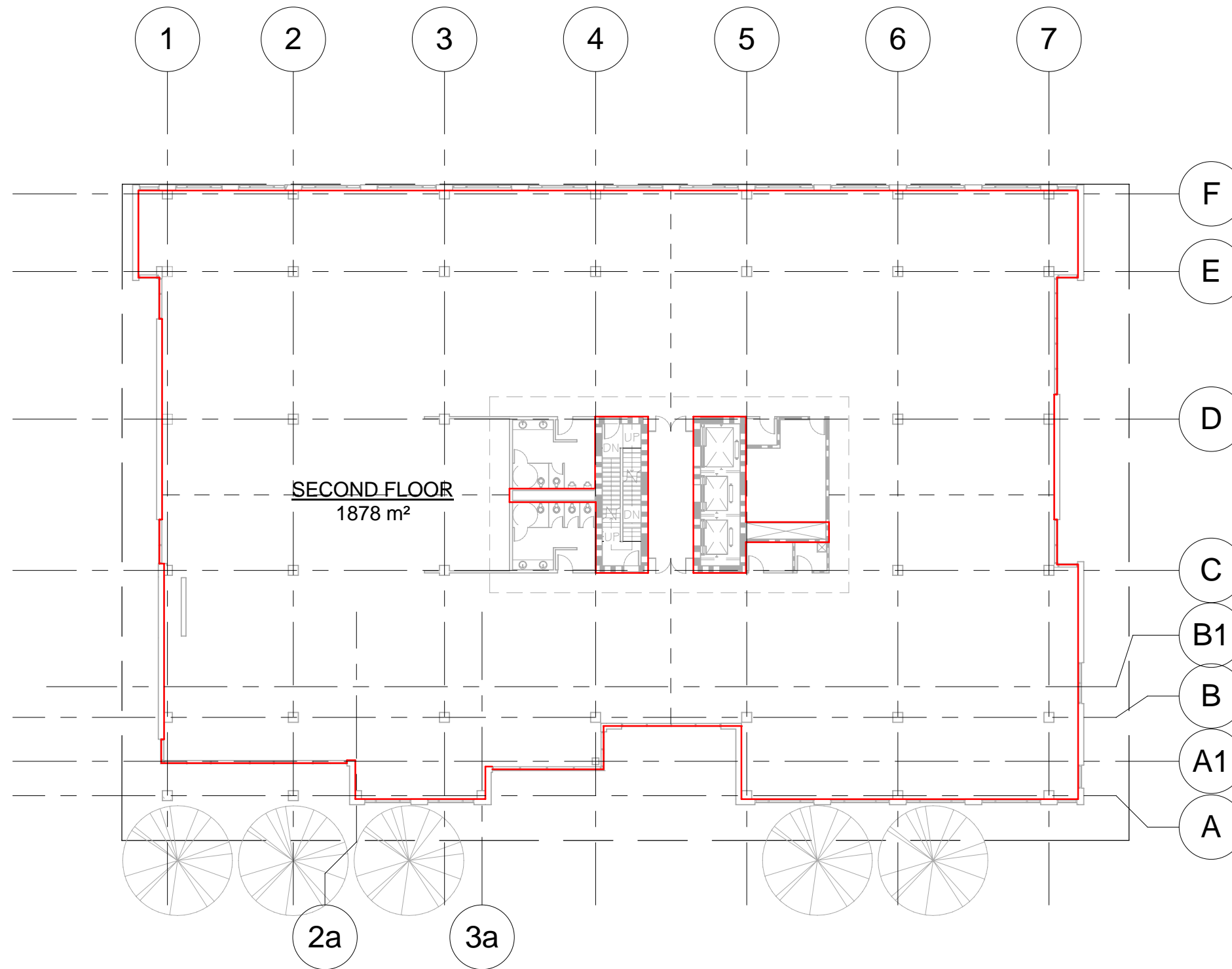


AREA RENTABLE		
Name	Area (m²)	Area (sq.ft.)
MAIN FLOOR - WEST	368 m²	3965 ft²
MAIN FLOOR - EAST	469 m²	5044 ft²
SECOND FLOOR	1878 m²	20215 ft²
THIRD FLOOR	1925 m²	20719 ft²
FOURTH FLOOR	1922 m²	20686 ft²
FIFTH FLOOR	1793 m²	19297 ft²
SIXTH FLOOR	1699 m²	18291 ft²
SEVENTH FLOOR	1711 m²	18419 ft²
EIGHTH FLOOR	1711 m²	18419 ft²
NINTH FLOOR	1711 m²	18419 ft²
TENTH FLOOR	1711 m²	18419 ft²
PENTHOUSE FLOOR	622 m²	6700 ft²
Grand total: 12	17521 m²	188594 ft²

12/02/2009 7:34:12 AM

PRISM PLACE
MAIN FLOOR RENTABLE AREA
214 - 11th AVENUE SW
CALGARY, ALBERTA

RENTABLE AREA CALCULATIONS BASED ON STANDARD
ANSI/BOMA Z65.1-1996



AREA RENTABLE		
Name	Area (m2)	Area (sq.ft.)

MAIN FLOOR - WEST	368 m ²	3965 ft ²
MAIN FLOOR - EAST	469 m ²	5044 ft ²
SECOND FLOOR	1878 m ²	20215 ft ²
THIRD FLOOR	1925 m ²	20719 ft ²
FOURTH FLOOR	1922 m ²	20686 ft ²
FIFTH FLOOR	1793 m ²	19297 ft ²
SIXTH FLOOR	1699 m ²	18291 ft ²
SEVENTH FLOOR	1711 m ²	18419 ft ²
EIGHTH FLOOR	1711 m ²	18419 ft ²
NINTH FLOOR	1711 m ²	18419 ft ²
TENTH FLOOR	1711 m ²	18419 ft ²
PENTHOUSE FLOOR	622 m ²	6700 ft ²

Grand total: 12 17521 m² 188594 ft²

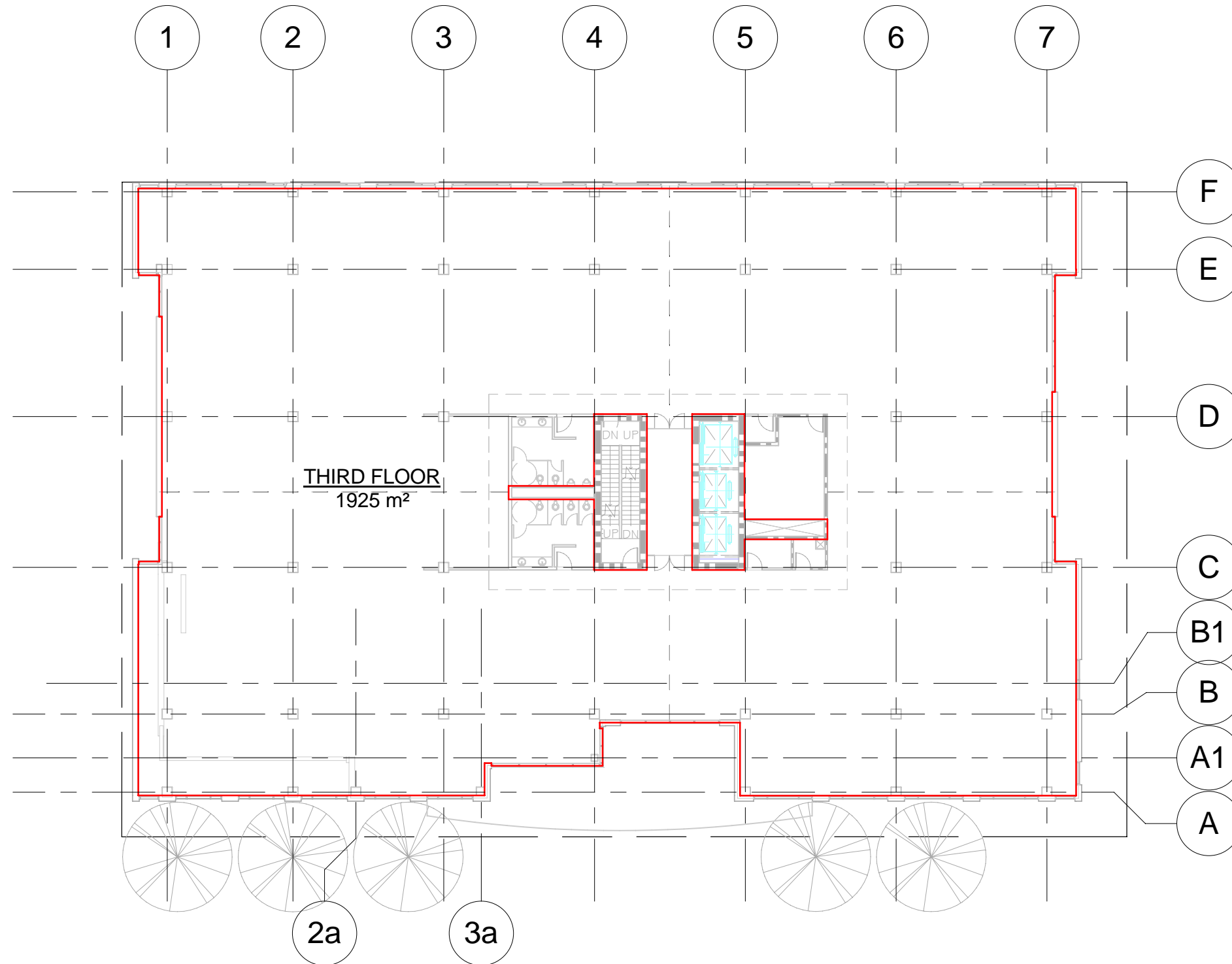
12/02/2009 7:34:15 AM

PRISM PLACE
SECOND FLOOR RENTABLE AREA
214 - 11th AVENUE SW
CALGARY, ALBERTA

RENTABLE AREA CALCULATIONS BASED ON STANDARD
ANSI/BOMA Z65.1-1996

AREA RENTABLE

Name	Area (m2)	Area (sq.ft.)
MAIN FLOOR - WEST	368 m ²	3965 ft ²
MAIN FLOOR - EAST	469 m ²	5044 ft ²
SECOND FLOOR	1878 m ²	20215 ft ²
THIRD FLOOR	1925 m ²	20719 ft ²
FOURTH FLOOR	1922 m ²	20686 ft ²
FIFTH FLOOR	1793 m ²	19297 ft ²
SIXTH FLOOR	1699 m ²	18291 ft ²
SEVENTH FLOOR	1711 m ²	18419 ft ²
EIGHTH FLOOR	1711 m ²	18419 ft ²
NINTH FLOOR	1711 m ²	18419 ft ²
TENTH FLOOR	1711 m ²	18419 ft ²
PENTHOUSE FLOOR	622 m ²	6700 ft ²
Grand total: 12	17521 m ²	188594 ft ²



THIRD FLOOR
1925 m²

12/02/2009 7:34:17 AM

PRISM PLACE
THIRD FLOOR RENTABLE AREA
214 - 11th AVENUE SW
CALGARY, ALBERTA

RENTABLE AREA CALCULATIONS BASED ON STANDARD
ANSI/BOMA Z65.1-1996



AREA RENTABLE		
Name	Area (m2)	Area (sq.ft.)

MAIN FLOOR - WEST	368 m ²	3965 ft ²
MAIN FLOOR - EAST	469 m ²	5044 ft ²
SECOND FLOOR	1878 m ²	20215 ft ²
THIRD FLOOR	1925 m ²	20719 ft ²
FOURTH FLOOR	1922 m ²	20686 ft ²
FIFTH FLOOR	1793 m ²	19297 ft ²
SIXTH FLOOR	1699 m ²	18291 ft ²
SEVENTH FLOOR	1711 m ²	18419 ft ²
EIGHTH FLOOR	1711 m ²	18419 ft ²
NINTH FLOOR	1711 m ²	18419 ft ²
TENTH FLOOR	1711 m ²	18419 ft ²
PENTHOUSE FLOOR	622 m ²	6700 ft ²
Grand total: 12	17521 m ²	188594 ft ²

PRISM PLACE
FOURTH FLOOR RENTABLE AREA
214 - 11th AVENUE SW
CALGARY, ALBERTA

RENTABLE AREA CALCULATIONS BASED ON STANDARD
ANSI/BOMA Z65.1-1996



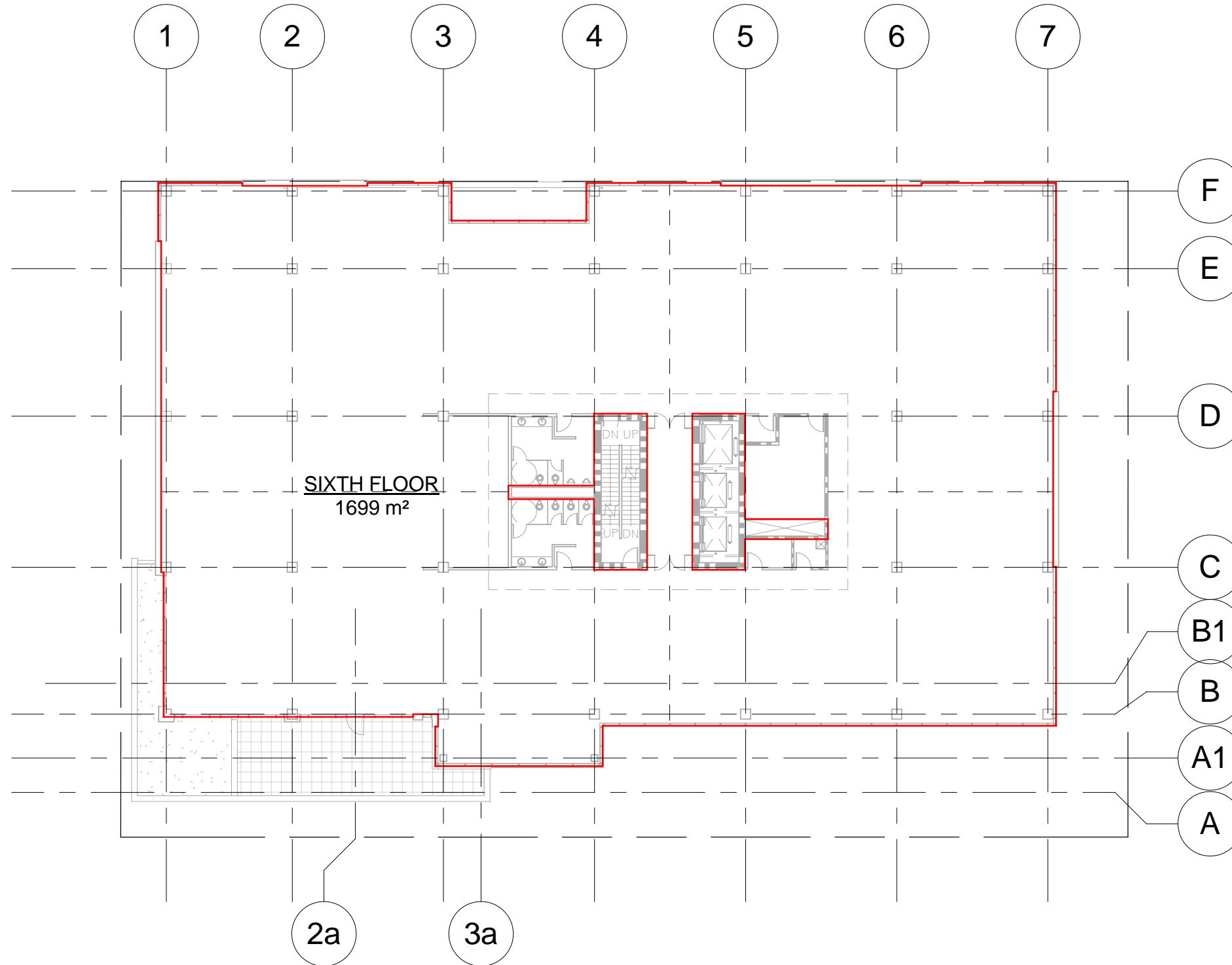
AREA RENTABLE		
Name	Area (m2)	Area (sq.ft.)

MAIN FLOOR - WEST	368 m ²	3965 ft ²
MAIN FLOOR - EAST	469 m ²	5044 ft ²
SECOND FLOOR	1878 m ²	20215 ft ²
THIRD FLOOR	1925 m ²	20719 ft ²
FOURTH FLOOR	1922 m ²	20686 ft ²
FIFTH FLOOR	1793 m ²	19297 ft ²
SIXTH FLOOR	1699 m ²	18291 ft ²
SEVENTH FLOOR	1711 m ²	18419 ft ²
EIGHTH FLOOR	1711 m ²	18419 ft ²
NINTH FLOOR	1711 m ²	18419 ft ²
TENTH FLOOR	1711 m ²	18419 ft ²
PENTHOUSE FLOOR	622 m ²	6700 ft ²
Grand total: 12	17521 m ²	188594 ft ²

12/02/2009 7:34:23 AM

PRISM PLACE
FIFTH FLOOR RENTABLE AREA
214 - 11th AVENUE SW
CALGARY, ALBERTA

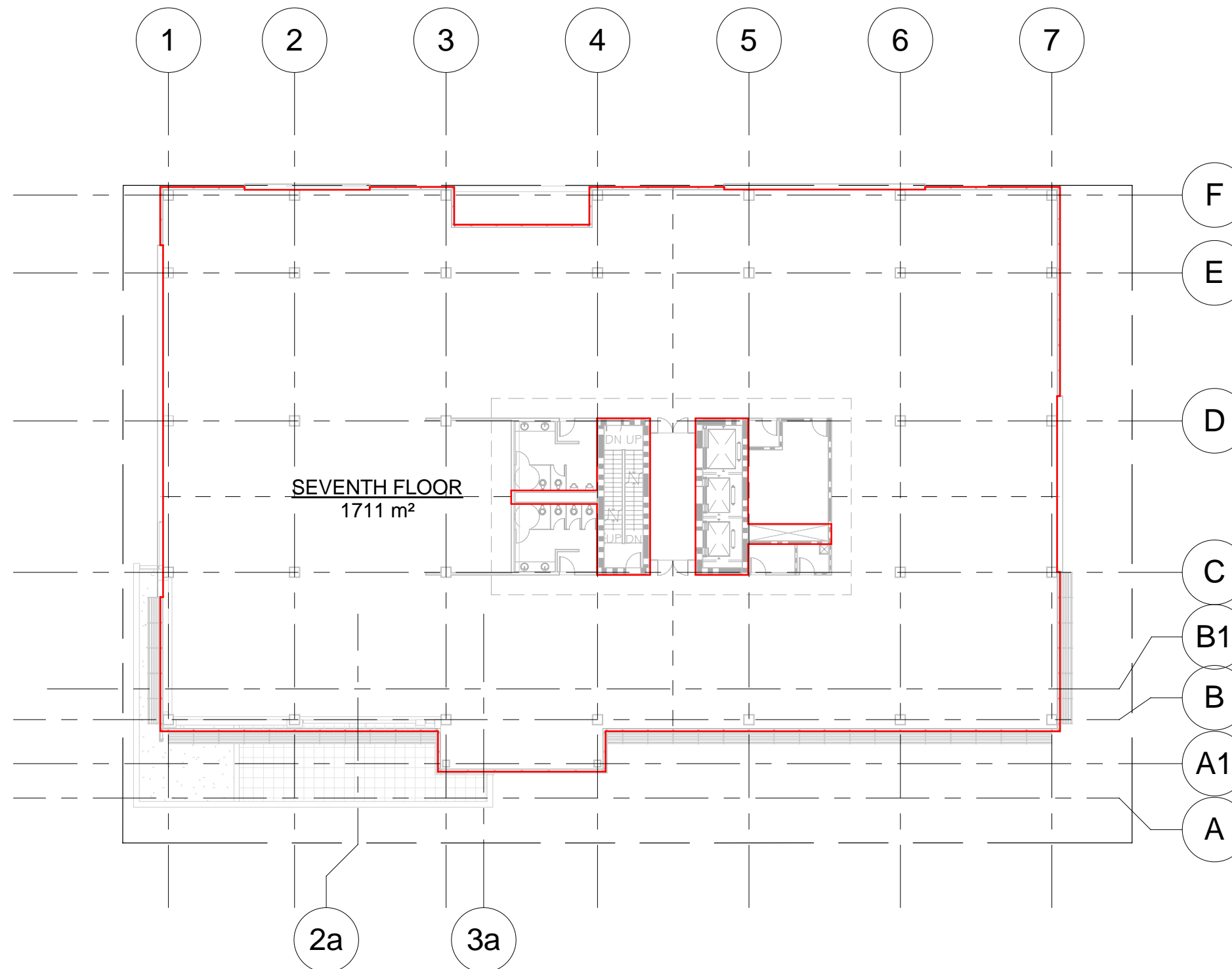
RENTABLE AREA CALCULATIONS BASED ON STANDARD
ANSI/BOMA Z65.1-1996



AREA RENTABLE		
Name	Area (m2)	Area (sq.ft.)
MAIN FLOOR - WEST	368 m ²	3965 ft ²
MAIN FLOOR - EAST	469 m ²	5044 ft ²
SECOND FLOOR	1878 m ²	20215 ft ²
THIRD FLOOR	1925 m ²	20719 ft ²
FOURTH FLOOR	1922 m ²	20686 ft ²
FIFTH FLOOR	1793 m ²	19297 ft ²
SIXTH FLOOR	1699 m ²	18291 ft ²
SEVENTH FLOOR	1711 m ²	18419 ft ²
EIGHTH FLOOR	1711 m ²	18419 ft ²
NINTH FLOOR	1711 m ²	18419 ft ²
TENTH FLOOR	1711 m ²	18419 ft ²
PENTHOUSE FLOOR	622 m ²	6700 ft ²
Grand total: 12	17521 m ²	188594 ft ²

PRISM PLACE
SIXTH FLOOR RENTABLE AREA
214 - 11th AVENUE SW
CALGARY, ALBERTA

RENTABLE AREA CALCULATIONS BASED ON STANDARD
ANSI/BOMA Z65.1-1996



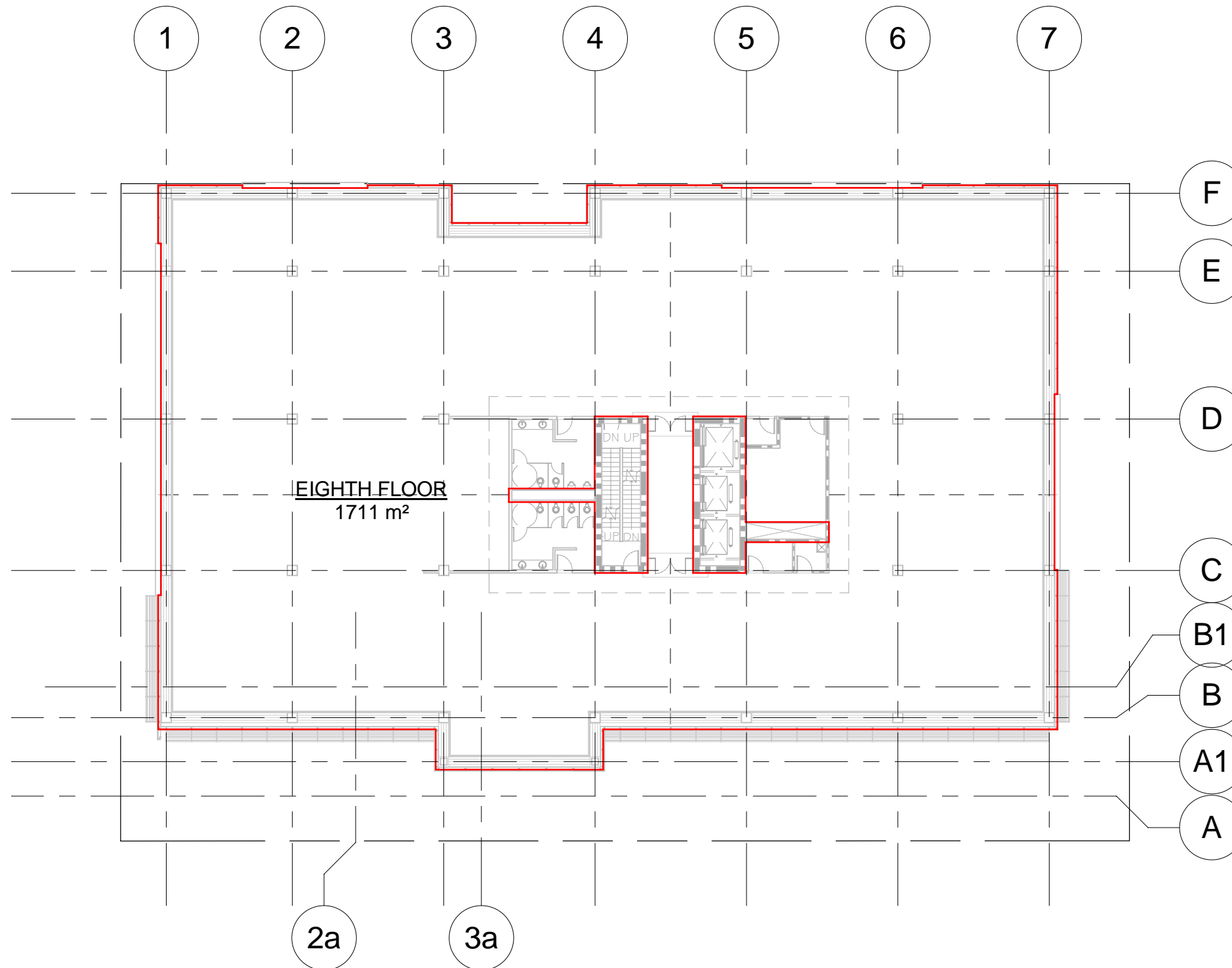
AREA RENTABLE		
Name	Area (m2)	Area (sq.ft.)

MAIN FLOOR - WEST	368 m ²	3965 ft ²
MAIN FLOOR - EAST	469 m ²	5044 ft ²
SECOND FLOOR	1878 m ²	20215 ft ²
THIRD FLOOR	1925 m ²	20719 ft ²
FOURTH FLOOR	1922 m ²	20686 ft ²
FIFTH FLOOR	1793 m ²	19297 ft ²
SIXTH FLOOR	1699 m ²	18291 ft ²
SEVENTH FLOOR	1711 m ²	18419 ft ²
EIGHTH FLOOR	1711 m ²	18419 ft ²
NINTH FLOOR	1711 m ²	18419 ft ²
TENTH FLOOR	1711 m ²	18419 ft ²
PENTHOUSE FLOOR	622 m ²	6700 ft ²
Grand total: 12	17521 m ²	188594 ft ²

RENTABLE AREA CALCULATIONS BASED ON STANDARD
ANSI/BOMA Z65.1-1996

AREA RENTABLE		
Name	Area (m2)	Area (sq.ft.)

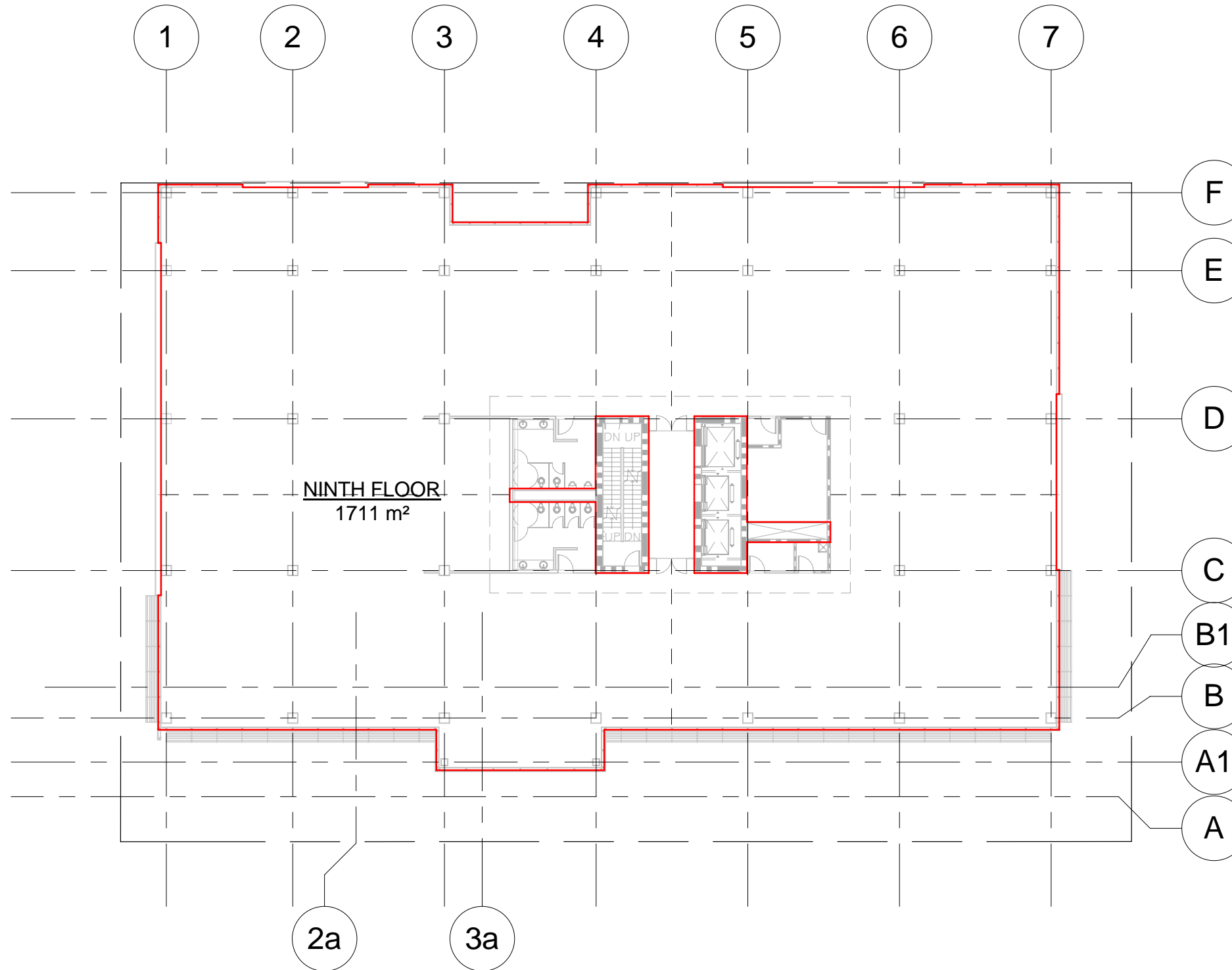
MAIN FLOOR - WEST	368 m ²	3965 ft ²
MAIN FLOOR - EAST	469 m ²	5044 ft ²
SECOND FLOOR	1878 m ²	20215 ft ²
THIRD FLOOR	1925 m ²	20719 ft ²
FOURTH FLOOR	1922 m ²	20686 ft ²
FIFTH FLOOR	1793 m ²	19297 ft ²
SIXTH FLOOR	1699 m ²	18291 ft ²
SEVENTH FLOOR	1711 m ²	18419 ft ²
EIGHTH FLOOR	1711 m ²	18419 ft ²
NINTH FLOOR	1711 m ²	18419 ft ²
TENTH FLOOR	1711 m ²	18419 ft ²
PENTHOUSE FLOOR	622 m ²	6700 ft ²
Grand total: 12	17521 m ²	188594 ft ²



12/02/2009 7:34:33 AM

PRISM PLACE
EIGHTH FLOOR RENTABLE AREA
214 - 11th AVENUE SW
CALGARY, ALBERTA

RENTABLE AREA CALCULATIONS BASED ON STANDARD
ANSI/BOMA Z65.1-1996

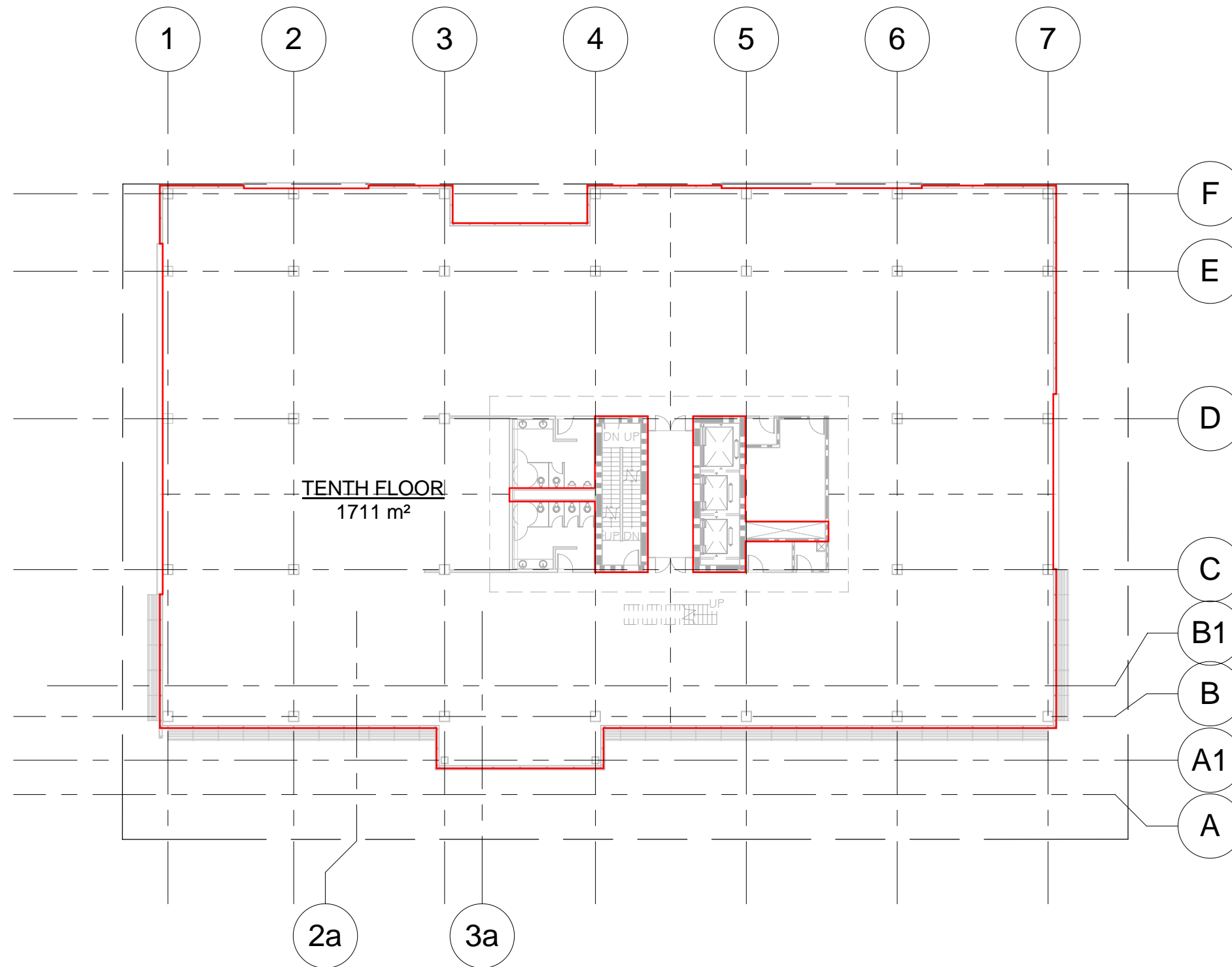


AREA RENTABLE		
Name	Area (m2)	Area (sq.ft.)

MAIN FLOOR - WEST	368 m ²	3965 ft ²
MAIN FLOOR - EAST	469 m ²	5044 ft ²
SECOND FLOOR	1878 m ²	20215 ft ²
THIRD FLOOR	1925 m ²	20719 ft ²
FOURTH FLOOR	1922 m ²	20686 ft ²
FIFTH FLOOR	1793 m ²	19297 ft ²
SIXTH FLOOR	1699 m ²	18291 ft ²
SEVENTH FLOOR	1711 m ²	18419 ft ²
EIGHTH FLOOR	1711 m ²	18419 ft ²
NINTH FLOOR	1711 m ²	18419 ft ²
TENTH FLOOR	1711 m ²	18419 ft ²
PENTHOUSE FLOOR	622 m ²	6700 ft ²
Grand total: 12	17521 m ²	188594 ft ²

PRISM PLACE
NINTH FLOOR RENTABLE AREA
214 - 11th AVENUE SW
CALGARY, ALBERTA

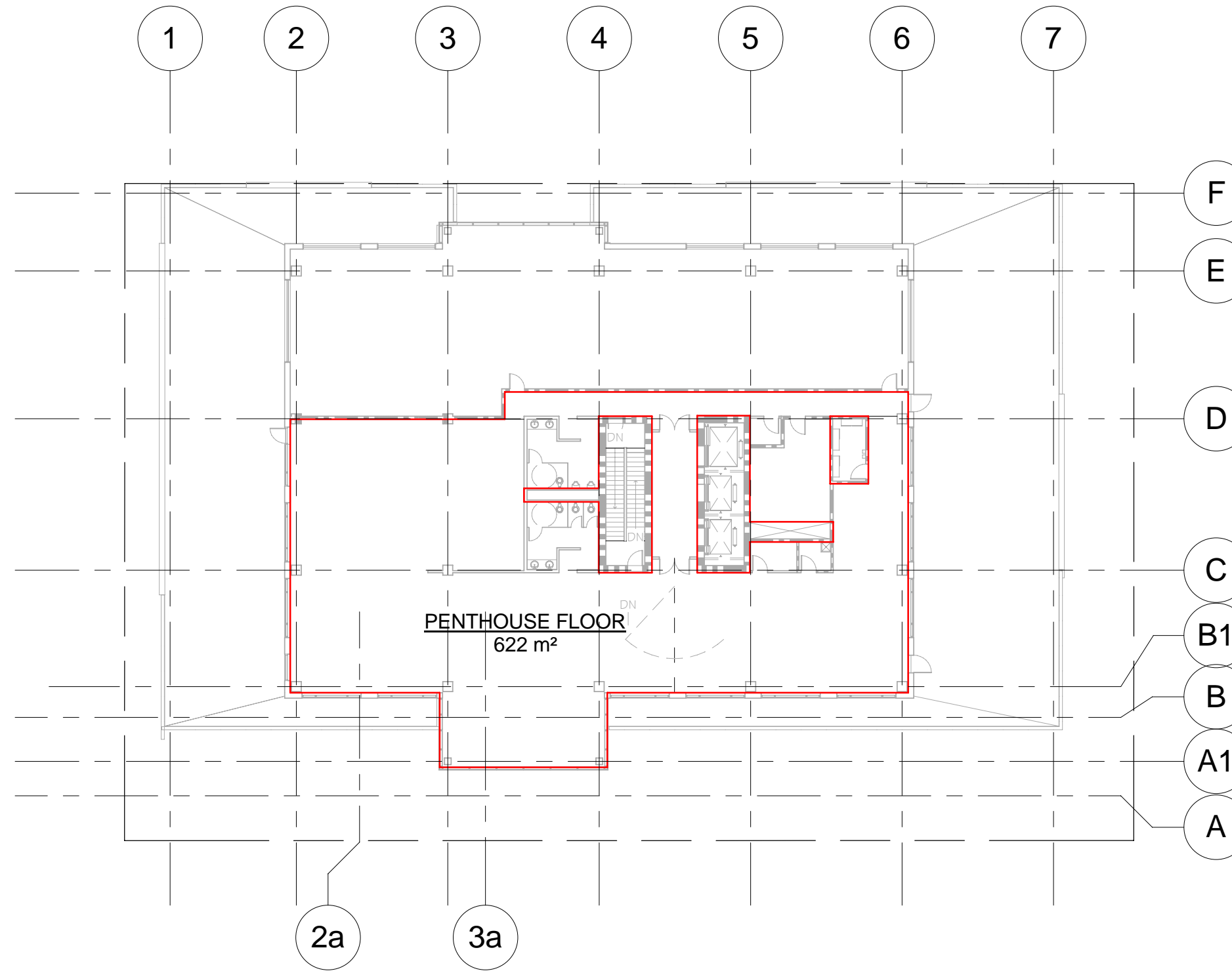
RENTABLE AREA CALCULATIONS BASED ON STANDARD
ANSI/BOMA Z65.1-1996



AREA RENTABLE		
Name	Area (m2)	Area (sq.ft.)
MAIN FLOOR - WEST	368 m ²	3965 ft ²
MAIN FLOOR - EAST	469 m ²	5044 ft ²
SECOND FLOOR	1878 m ²	20215 ft ²
THIRD FLOOR	1925 m ²	20719 ft ²
FOURTH FLOOR	1922 m ²	20686 ft ²
FIFTH FLOOR	1793 m ²	19297 ft ²
SIXTH FLOOR	1699 m ²	18291 ft ²
SEVENTH FLOOR	1711 m ²	18419 ft ²
EIGHTH FLOOR	1711 m ²	18419 ft ²
NINTH FLOOR	1711 m ²	18419 ft ²
TENTH FLOOR	1711 m ²	18419 ft ²
PENTHOUSE FLOOR	622 m ²	6700 ft ²
Grand total: 12	17521 m ²	188594 ft ²

PRISM PLACE
TENTH FLOOR RENTABLE AREA
214 - 11th AVENUE SW
CALGARY, ALBERTA

RENTABLE AREA CALCULATIONS BASED ON STANDARD
ANSI/BOMA Z65.1-1996



AREA RENTABLE		
Name	Area (m2)	Area (sq.ft.)

MAIN FLOOR - WEST	368 m ²	3965 ft ²
MAIN FLOOR - EAST	469 m ²	5044 ft ²
SECOND FLOOR	1878 m ²	20215 ft ²
THIRD FLOOR	1925 m ²	20719 ft ²
FOURTH FLOOR	1922 m ²	20686 ft ²
FIFTH FLOOR	1793 m ²	19297 ft ²
SIXTH FLOOR	1699 m ²	18291 ft ²
SEVENTH FLOOR	1711 m ²	18419 ft ²
EIGHTH FLOOR	1711 m ²	18419 ft ²
NINTH FLOOR	1711 m ²	18419 ft ²
TENTH FLOOR	1711 m ²	18419 ft ²
PENTHOUSE FLOOR	622 m ²	6700 ft ²
Grand total: 12	17521 m ²	188594 ft ²

12/02/2009 7:34:43 AM

PRISM PLACE
PENTHOUSE FLOOR RENTABLE AREA
214 - 11th AVENUE SW
CALGARY, ALBERTA